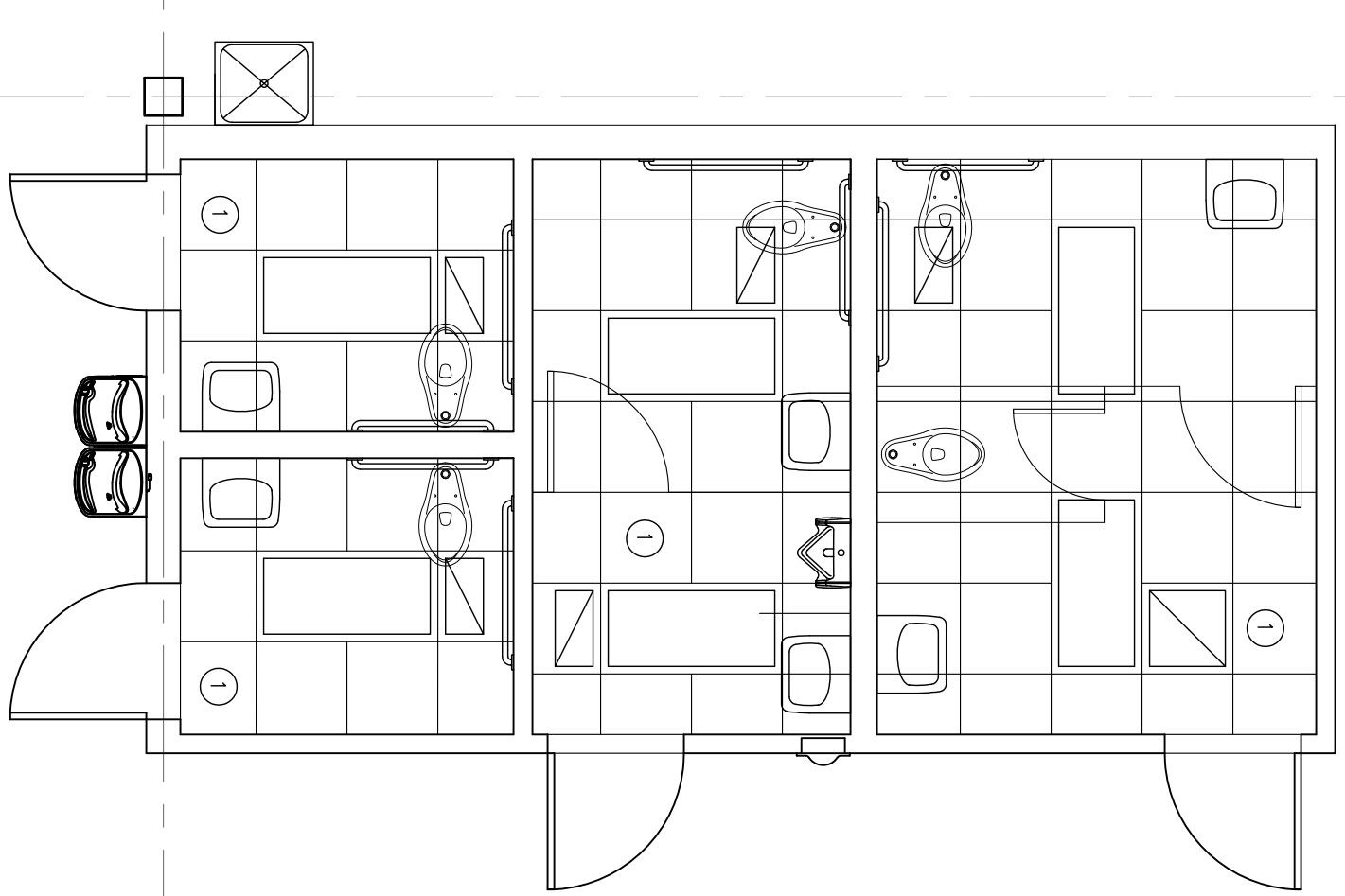
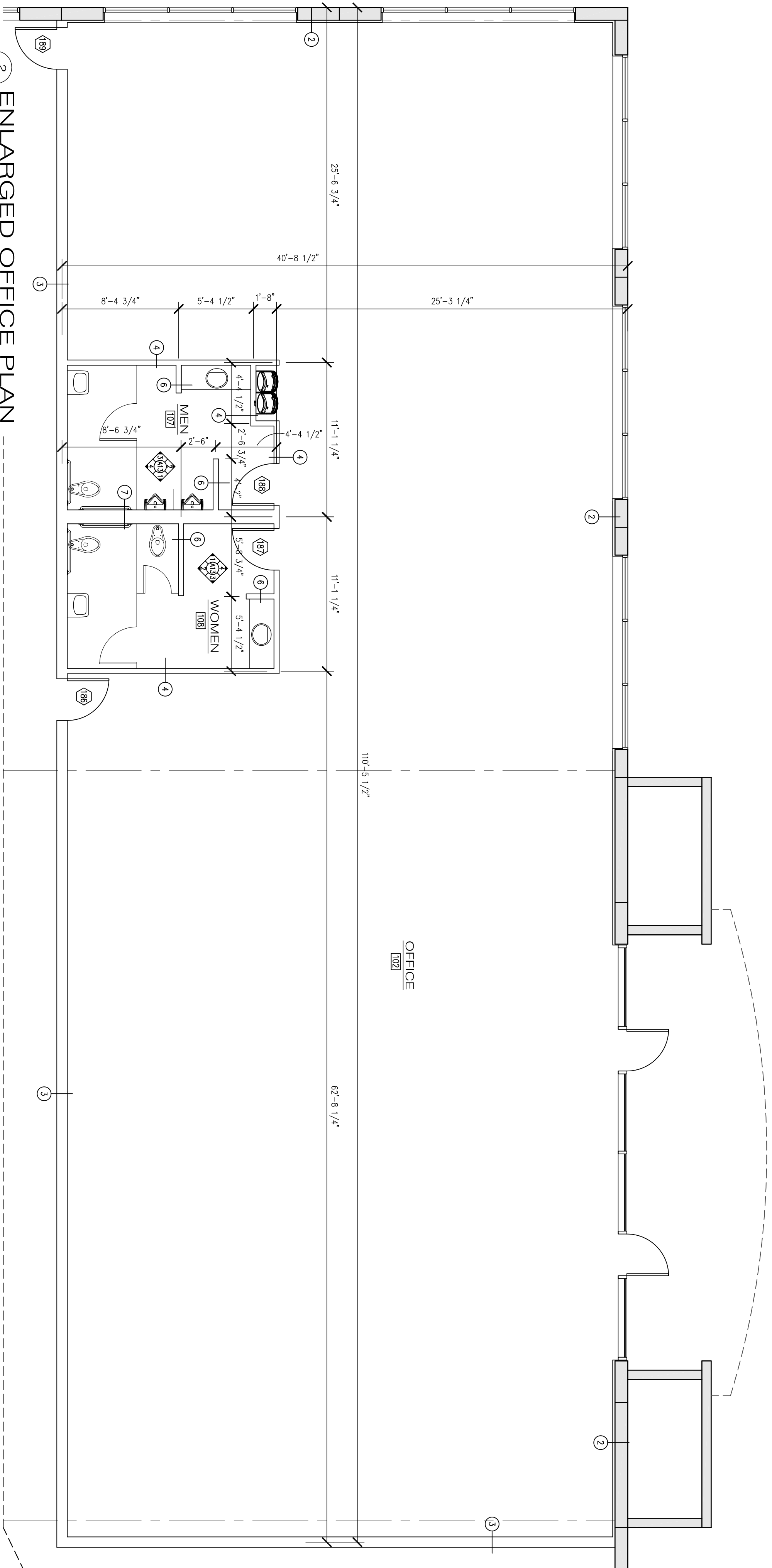


1 OFFICE REFLECTED CEILING PLAN
A-5 SCALE 3/16" = 1'-0"

- REFLECTED CEILING NOTES**
- INDICATES 2'x2' CEILING GRID, 12' AFF. UNLESS NOTED OTHERWISE.
 - ▭ INDICATES 2'x4' FLUORESCENT FIXTURE SEE ELECTRICAL PLANS
 - ⊗ INDICATES EXIT LIGHT
 - ⊙ INDICATES OCCUPANCY SENSOR
 - ⊕ INDICATES 2'x2' SUSPENDED ACOUSTICAL TILE CEILING AT 8'-0" ABOVE FINISH FLOOR.
 - ⊘ INDICATES RETURN AIR GRILLE

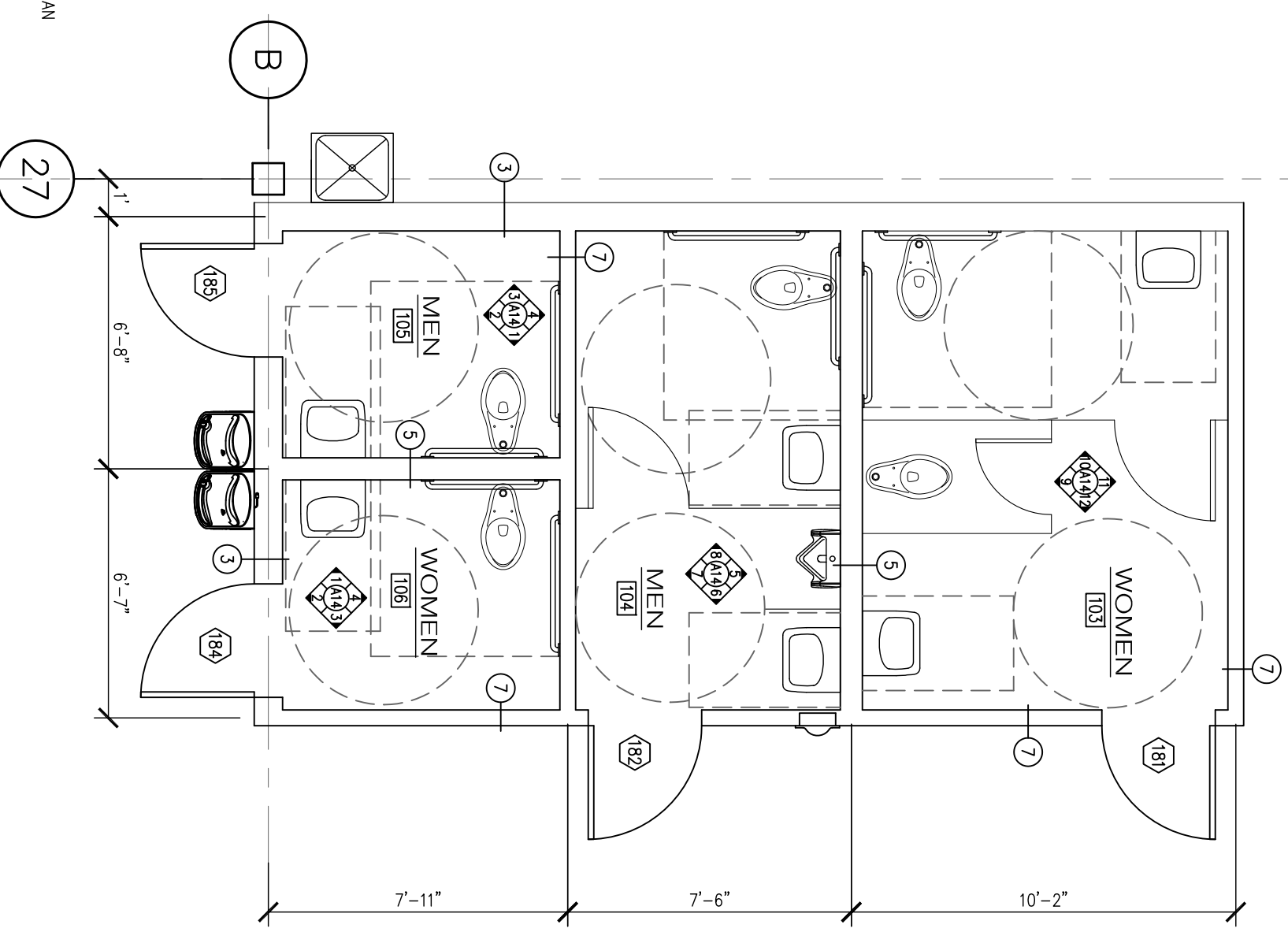


4 RR REFLECTED CEILING PLAN
A-5 SCALE 1/4" = 1'-0"

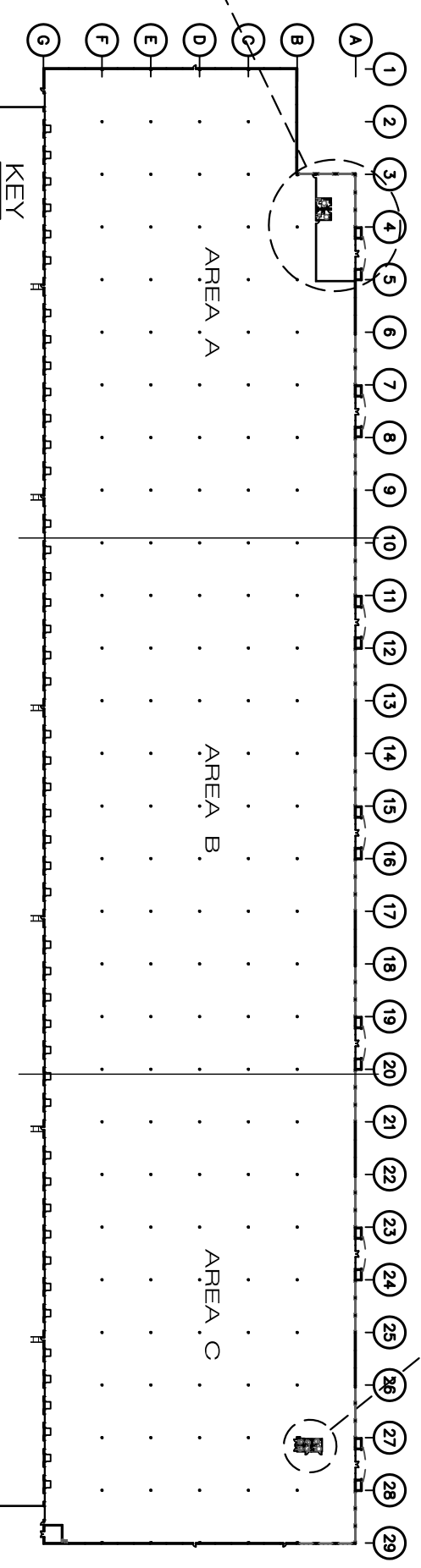


2 ENLARGED OFFICE PLAN
A-5 SCALE 3/16" = 1'-0"

- LEGEND**
- ▭ INDICATES TILT-UP CONCRETE WALLS
 - ① = INTERIOR ELEVATION SEE SHEET A-14
 - ① = INDICATES DOOR AND WINDOW NUMBER SEE SHEET A-12 & A-13.
 - 100 = INDICATES ROOM NUMBER
 - F.E. = FIRE EXTINGUISHER
- FOR FINISHES SEE FINISH SCHEDULE SHEET A-13
- DIMENSIONS:**
ALL WALLS ARE DIMENSIONED TO THEIR FACE. SEE THE FOUNDATION PLAN FOR ANY DIMENSIONS OF CONCRETE WALLS.
SEE DETAILS NOTED FOR ADDITIONAL DIMENSIONS IN THOSE AREAS.



3 ENLARGED RESTROOM PLAN
A-5 SCALE 1/4" = 1'-0"



KEY

SHEET TITLE		A NEW DISTRIBUTION CENTER AT 250 BUSCH DR. EAST IMESON INTERNATIONAL INDUSTRIAL PARK JACKSONVILLE FLORIDA		FLORIDA CROWN ARCHITECTS, ENGINEERS & PLANNERS, INC. 3600 VINELAND ROAD, SUITE 101, 32811 ORLANDO FLORIDA Cert. No. AA - C001045 PHONE 407-841-1414		NO. DATE ISSUE 7 12/28/18 Permit 10/28/19 Office Relocated	
PROJECT NO.	1844			Florida rwebbco@orlandotelco.net FAX 407-422-7048			
SHEET NO.	A-5			We hereby acknowledge we reserve the property rights to this drawing and the right to be used in any form or manner whatsoever without express written permission and consent.			